

THE IRRESISTIBLE FLAMES OF MASPORT



GAS LOG FIRE FLUE MANUAL 2004

552338

ISSUE A, JANUARY 2004



AUSTRALIA
PO Box 533, Braeside, Victoria 3195
Ph. 1300 366 225 fax 1800 035 594
email sales@masport.com.au
www.masport.com.au

Masport®
gas & wood fires

Direct Vent Top Exit Vertical Flue Kit

Product Description

Part Number

DV Top Exit Vertical
Flue Kit

552324



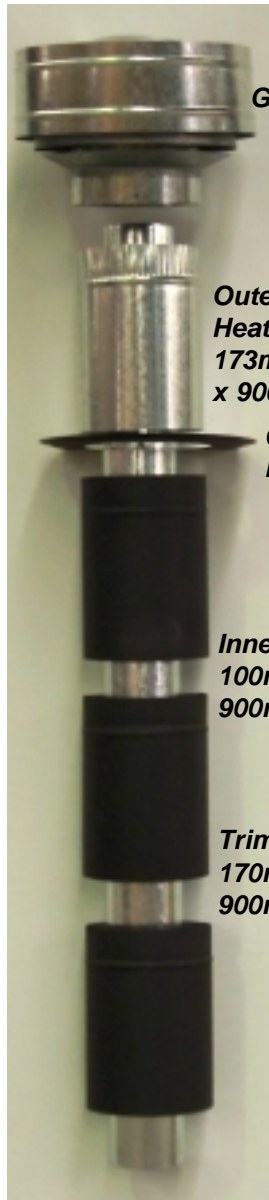
Geneva (F39) Direct Vent Top Exit

This kit contains: Gas Cowl DV, Slip Liner, Outer Liner 900mm, Ceiling Plate, Trim Liners 900mm x 3, Inner Flue Crimped 900mm x 4, Mil-Pac Sealant x 1

Will fit Masport Geneva Direct Vent Gas Fires

Direct Vent Top Exit Vertical Flue Kit Installation Instructions

This flue kit has been manufactured in accordance with AS5601 2002. To ensure safety this flue kit must be installed as outlined in these instructions. Heater and flue clearances from combustibles must be in accordance with Masport specifications and AG601.



Gas Cowl

*Outer Slip
Heat Shield
173mm dia
x 900mm*

*Ceiling
Plate*

*Inner Flue
100mm dia x
900mm x 4*

*Trim
170mm dia x
900mm x 3*

- 1 Locate the heater in its proposed position and mark a point on the ceiling that is directly above the centre of the heaters flue outlet. Check the heater location allows the flue outer heat shield to clear all structural roof timbers by **40mm minimum**.

- 2 Cut a 250mm square hole in the ceiling using the centre mark as a guide. Directly above cut a round or square 250mm hole in the roof material to accommodate the flue outer shield.

- 3 Fit the **non-combustible** nogs around the holes in the ceiling space if required.

- 4 Measure overall length of flue outer slip heat shield and coloured flue trim required. Fix flue outer slip heat shield length(s) to the painted flue trim length(s), ensuring swaged ends are uppermost, with three pop rivets or self-taping screws. Insert assembled lengths up through ceiling hole. Fix additional painted flue trim lengths and continue to raise through roof cavity. Check the height of the flue outer shield penetrates the roof structure by 500mm minimum.

The flue is required to be at least 500mm above the nearest point on any part of the roof. It is recommended extending the flue above the ridgeline. Refer to AG601 for more information. Additional flue heat shields may have to be added to ensure minimum flue height is achieved.

- 5 Lift flue outer trim and slide ceiling plate under trim length ensuring it is the correct way up, secure to the ceiling using screws supplied.

- 6 Assemble the 100mm galvanized flue pipes together ensuring all joints are fully sealed with Milpac flue sealer (supplied) and plane ends at both ends of the flue. Use pop rivets or self-taping screws to secure.

- 7 Lower 100mm galvanized flue pipes from the roof into the flue outer shield and onto the heater flue outlet, ensure Milpac sealer is used on the heater stub. The flue outer shield can be lifted to assist inner flue location.

- 8 Slip flue outer trim over external flue outlet on fire

- 9 Fix an appropriate weather shield around the flue outer slip heat shield.

- 10 Ensure the Inner flue pipe is the correct length prior to fitting the gas cowl, the outer slip heat shield will accommodate this.

- 11 Seal weather shield to roof with appropriate sealer.

- 12 Run fire for at least 15 minutes to check for inner flue leaks (fire will drop out completely should inner flue not be sealed correctly)

**Flue Kit Part Number:
552324**

Note: it is the responsibility of the installer to ensure that the installation of this flue system complies with AS5601 2002 and all local body requirements

Will fit all Masport Geneva Direct Vent Gas Fires

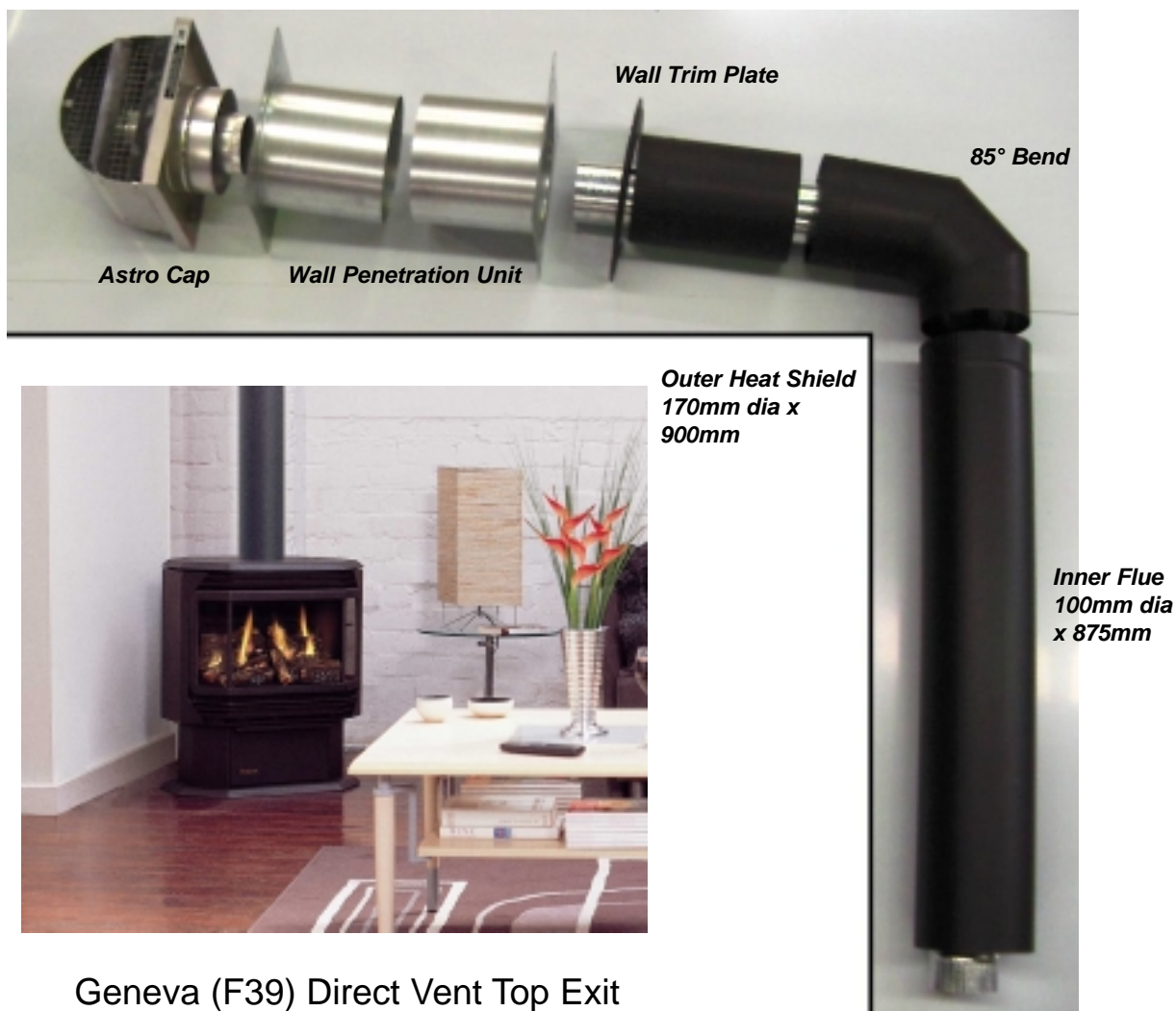
Direct Vent Top Exit Horizontal Flue Kit

Product Description

Part Number

DV Top Exit Horizontal
Flue Kit

552326



This kit contains: Astro Cap, Wall Penetration Unit, Wall Trim Plate, Trim Liner 300mm, Inner Flue 300mm, 85° Outer Bend, 85° Inner Flue Bend, Inner Flue 875mm, Outer Trim Flue 900mm, Mil-Pac Sealant x 1

WARNING:

When installing in a high wind situation, common sense must prevail. Choose a sheltered side of the house.

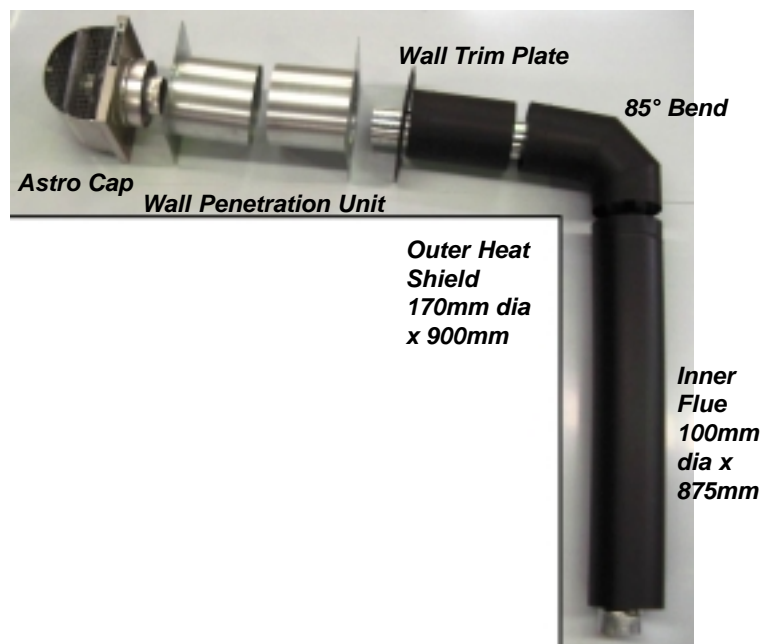
A non-combustible water ingress shelf will need to be fitted 200mm above the terminal to prevent water ingress in extreme conditions or where no soffit shelters the terminal.

This product will fit Masport Geneva Direct Vent Gas Fires

Direct Vent Top Exit Horizontal Flue Kit Installation Instructions

This flue kit has been manufactured in accordance with AS5601 2002. To ensure safety, this flue kit must be installed as outlined in these instructions. Heater and flue clearances must be in accordance with Masport and local body instructions.

- 1 Locate the heater in its proposed position and mark the wall above it to the minimum or maximum allowable flue length with the horizontal bend temporarily fitted allowing a 10mm rise in the horizontal run as per the installation manual supplied with the fire. A 10mm rise is required from the centre of the 90-degree bend to ensure flue and fire does not over heat causing a fire hazard. Check the horizontal run length does not exceed measurement supplied in installation manual.
- 2 Check the heater installation allows the thru-wall penetration unit to clear all structural wall timbers and Astro gas cowl clearances as per installation instructions supplied with fire.
- 3 Cut a 250mm square hole through the combustible wall surface using a mark as a centreline. Nog if necessary for structural support. **A minimum 40mm clearance is required from the outer heat shield and all combustible surfaces.** (Should penetration be through a non-combustible wall the thru-wall penetration unit is not required and a 178mm hole is required only)
- 4 Measure the overall depth of the wall and if necessary trim thru-wall penetration unit to required length. Fix thru-wall penetration unit to wall structure; secure the square flange to the outer surface of the external wall with appropriate fasteners. Fix to inner wall similarly.
- 5 Fit galvanized bend inside outer heat shield bend then, fix 100mm galvanized flue length (remembering to seal all inner flue joints with Milpac sealer supplied) and flue bend to required length using pop rivets or self tapping screws.
- 6 Fix outer heat shield trim length(s) to outer heat shield bend using pop rivets or self tapping screws
- 7 Fix wall trim plate to wall with screws supplied
- 8 Apply Milpac sealer to inner flue stub of the heater. Fix inner flue and heat shield trim lengths to heater stubs and inserting through wall penetration.
- 9 Apply Milpac sealer to flue stub of wall penetration Astro cowl and insert cowl through wall ensuring flue stub of cowl fits inside flue.
- 10 Seal all external joints with appropriate sealer to weatherproof.
- 11 Check air restrictor setting inside heater as per installation manual and start heater. Run heater for at least 15 minutes to test inner flue seal (should heater drop out completely inner flue is leaking)



**Flue Kit Part
Number: 552326**

Note: It is the installer's responsibility to ensure the installation complies with AS5601 2002 and all local body regulations

Will fit Masport Geneva Direct Vent Gas Fires

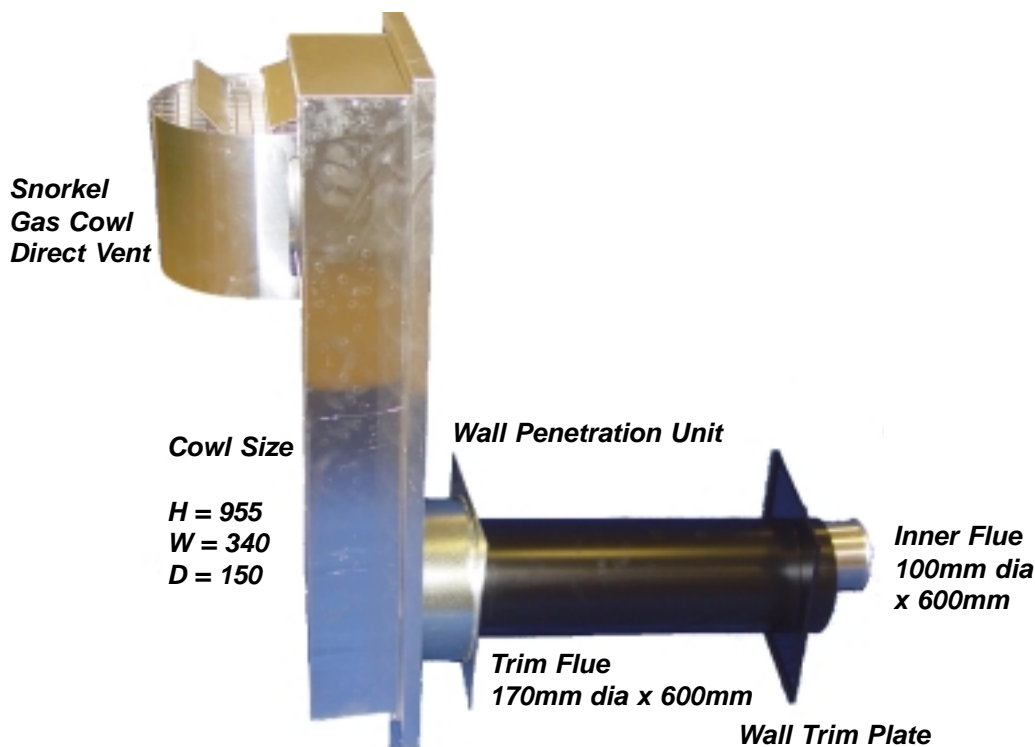
Direct Vent Rear Exit Horizontal Flue Kit

Product Description

Part Number

DV Rear Exit Horizontal
Flue Kit

946-120



This kit contains: Snorkel Cowl DV, Wall Penetration Unit, Wall Trim Kit, Screws and Spacers x 4, Telescopic Trim Flue 300mm x 2, Inner Flue 400mm, Mil-Pac Sealant x 1



DV Corner Installation
Bend Kit

588655



Geneva (F37)
Direct Vent Rear Exit

WARNING:

When installing in a high wind situation, common sense must prevail. Choose a sheltered side of the house.

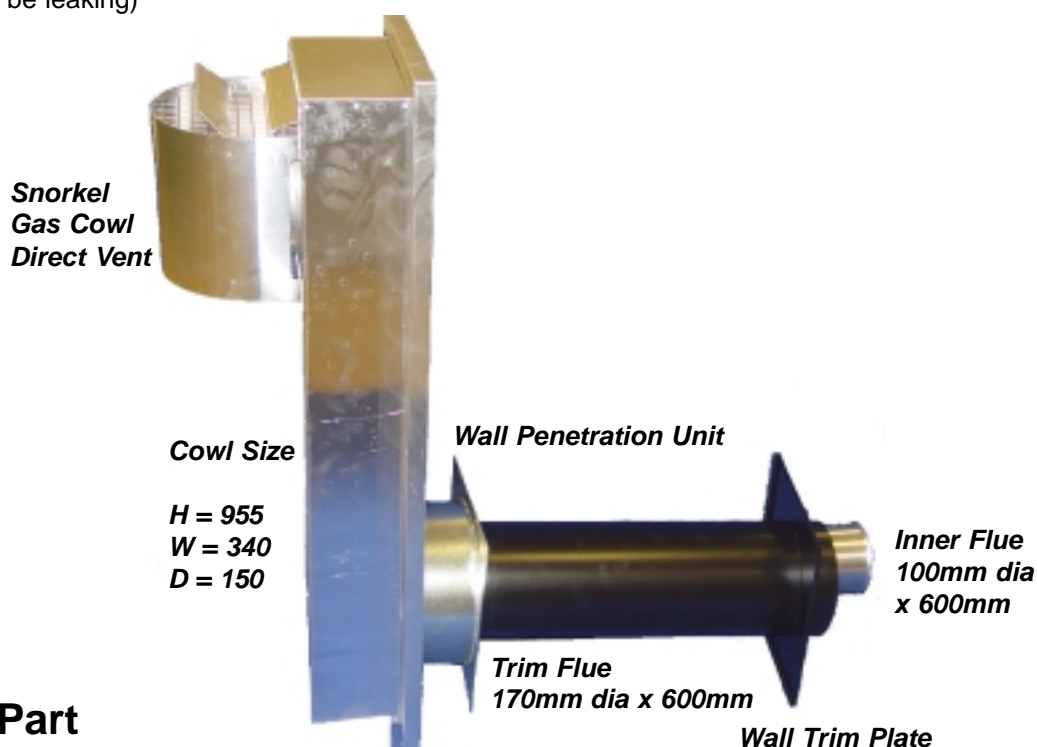
A non-combustible water ingress shelf will need to be fitted 200mm above the terminal to prevent water ingress in extreme conditions or where no soffit shelters the terminal.

This flue will fit Masport Geneva Rear Exit Direct Vent Gas Fires

DV Rear Exit Horizontal Flue Kit Installation Instructions

This flue kit has been manufactured in accordance with AS5601 2002. To ensure safety this flue kit must be installed in accordance with Masport specifications and local body regulations.

- 1 Locate the heater in its proposed position and mark a point 10mm higher on the wall directly behind the heaters centre flue outlet, (the 10mm difference is to ensure the flue system rises or an overheat and heater failure will occur causing a fire hazard). Check that the heaters location allows the thru-wall penetration unit to clear all structural wall timbers as well as required gas cowl clearances. Check minimum-maximum flue length is strictly followed as specified in heater installation manual.
- 2 Cut a 250mm square hole through the combustible wall structure using a mark as a centreline. **Nog if necessary for structural support. A minimum of 40mm clearance is required from the flue outer heat shield and all combustible surfaces.** (Should penetration be through a non-combustible wall the thru-wall penetration unit is not required and a 178mm hole is required only)
- 3 Measure the overall depth of the combustible wall and if necessary slide-trim thru-wall penetration unit to the required length. Fix thru-wall penetration unit through wall structure, securing the square flange to the outer surface of the external wall with appropriate fasteners (not supplied). Fix to inner wall similarly.
- 4 Measure distance of heater stub to outside surface of wall and cut 100mm galvanized flue if necessary (note the 100mm flue supplied is the maximum allowed). Fix the 100mm flue pipe to the gas cowl ensuring flue joint is sealed with Milpac flue sealer supplied.
- 5 Fix the 170mm outer painted heat shield to the heater. Place painted wall plate over painted heat shield.
- 6 Slide 100mm inner flue with gas cowl connected through from outside and secure to wall and weather proof all outer joins. Seal inner flue pipe with Milpac before sliding heater back to connect system.
- 7 Fasten wall trim plate with screws
- 8 Start heater and run for at least 15 minutes to ensure inner flue is sealed (heater will drop out completely should inner flue be leaking)



**Flue Kit Part
Number: 946-120**

Note; it is the installer's responsibility to ensure that the installation complies with AS5601 2002 and all local body requirements.

Will fit Geneva Rear Exit Direct Vent Gas Fires

Direct Vent Off Set and Extention Kit



Geneva Direct Vent



Grenada (P36)



Calais (P36)



**Off Set Kit - Room/Roof
(Zero Clearance)**

Part No: 552335



**Extension Kit - Room
(Painted)**

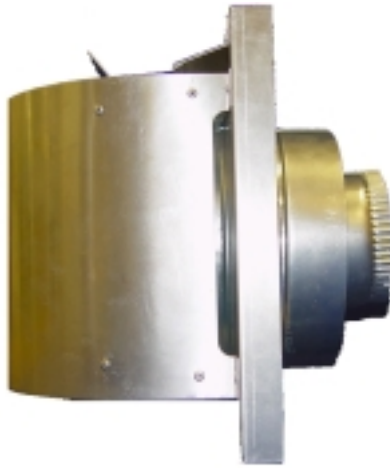
Part No: 552334

**Extension Kit - Roof
- Zero Clearance
(Unpainted)**

Part No: 588674

Will fit Masport Geneva, Roma, Grenada & Calais Gas Fires

Gas Flue Kit Accessories - D Vent



**Direct Vent Astro Cowl
Horizontal**

Part No: 946-578/P



**Direct Vent Cowl
Vertical**

Part No: 556679